



Milano Collection



INSTABILELAB
ART IN THE WALLPAPER



INSTABILELAB®

ART IN THE WALLPAPER

Milano Collection

Eccellenza ed esclusività sono le parole chiave delle novità che Instabilelab propone in occasione della 60a edizione del Salone del Mobile di Milano.

Un concept che evoca i canoni d'haute couture per proposte rivolte a un pubblico esigente e alla ricerca di prodotti realmente eccezionali.

Dieci nuove affascinanti grafiche marchiate dall'inconfondibile timbro creativo di Instabilelab, dedicate a VELLUTO, nuova sensuale carta da parati, e a CARPETIA ROYAL la linea di tappeti di elevato pregio, proposta con nuovi materiali e grandi dimensioni.

Excellence and exclusivity will be the keywords of the new products that Instabilelab will propose on the occasion of the 60th edition of the Salone del Mobile in Milan.

A concept that evokes the canons of haute couture for proposals aimed at a demanding public in search of truly exceptional products. Ten new fascinating graphics with the unmistakable creative flair of Instabilelab, dedicated to a new sensual wallpaper VELLUTO and an extraordinary new line of carpets, CARPETIA ROYAL, with new materials and sizes.



INSTABILELAB®
ART IN THE WALLPAPER

index

MILANO COLLECTION

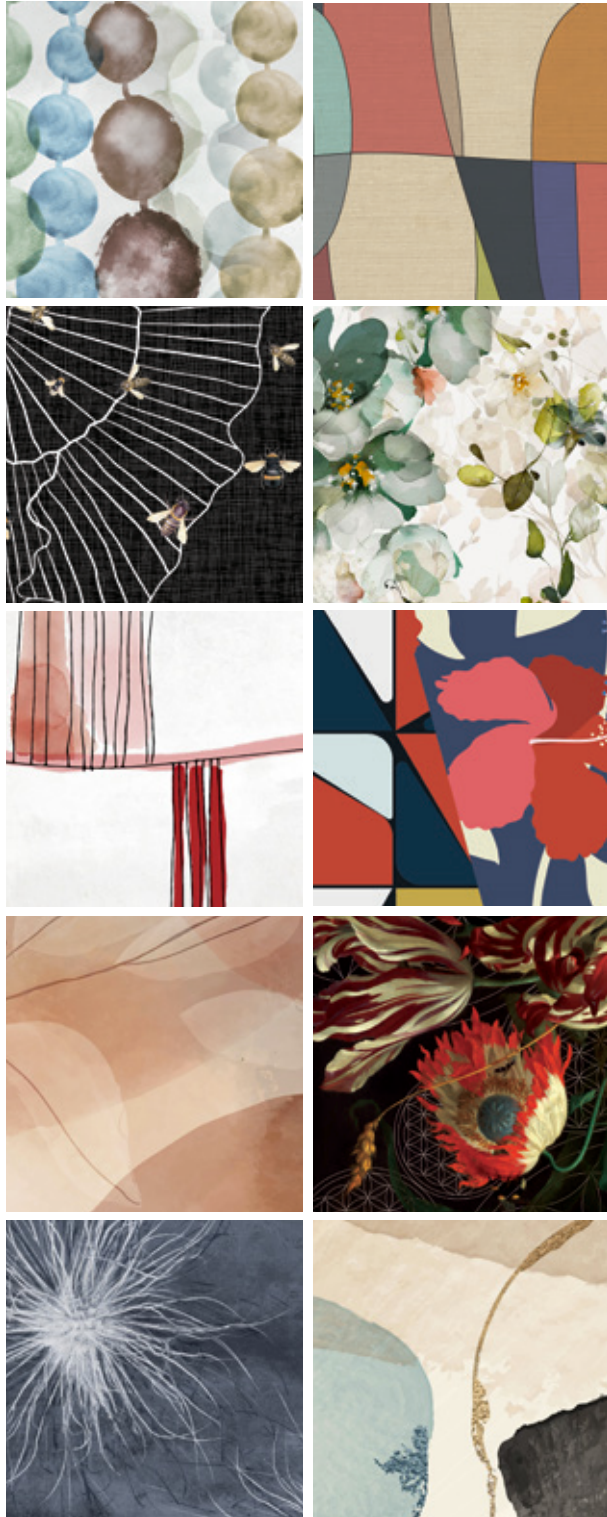
ABOUT US		07
CARPETIA ROYAL		08
VELLUTO		11

ROYAL LOCATIONS

FRIDA		16-17	38
EGO		18-19	39
BEE		20-21	40
BOTTLE		22-23	41
JARDIN		24-25	42
BOTERO		27	43
GRACE		28-29	44
KARMA		30-31	45
PLAN		32-33	46
60'S		34-35	47

TECHNICAL DESCRIPTION

CARPET DIMENSIONS		37
WALLPAPER GRAPHICS		50-51
CARPETIA ROYAL		53
VELLUTO		54
SAMPLE		55





ABOUT US

Un'azienda veneziana dall'inesauribile creatività, Instabilelab propone la propria personale ed inedita interpretazione della carta da parati rimescolando idee e stili diversi, creando abbinamenti estetico-concettuali inediti, per dare reale valore e personalità agli spazi abitativi.

Innumerevoli sono i pattern e le atmosfere che l'azienda presenta anche grazie allo studio di texture e di nuove modalità di impiego e applicazione. Instabilelab supera i limiti dell'utilizzo del parato, che progetta in un'ottica di continuum grafico realizzabile attraverso una serie di prodotti e tessuti dedicati a chi vuole realizzare un'atmosfera oltre ad un ambiente.

Non solo creatività ma anche tecnologia: l'azienda ha il know how necessario per riprodurre le sue grafiche su diversi tipi di supporto e per coprire ogni aspetto del living indoor (pareti, soffitti, pavimenti, zone umide, elementi d'arredo, tessuti) e outdoor, grazie all'impiego di rivestimenti resistenti agli agenti atmosferici.

A Venetian company of inexhaustible creativity, Instabilelab presents its own personal and original interpretation of wallpaper, mixing different ideas and styles, creating new aesthetic-conceptual combinations to give real value and personality to living spaces.

The company presents countless patterns and atmospheres, also thanks to the study of textures and new methods of use and application. Instabilelab goes beyond the limits of the use of wallpaper, which it designs with a graphic continuum that can be achieved through a series of products and fabrics dedicated to those who want to create an atmosphere rather than an environment.

Not only creativity but also technology: the company has the necessary know-how to reproduce its graphics on different types of support and to cover every aspect of indoor living (walls, ceilings, floors, wet areas, furnishing elements, fabrics) and outdoor, thanks to the use of weather-resistant coatings.

CARPETIA ROYAL

Ideati nel contesto del progetto Custom-Me, i tappeti Instabilelab risultano talmente caratterizzanti e forti con il loro impatto grafico e decorativo da poter creare una collezione indipendente, perfetta per valorizzare qualunque tipo di arredo.

La tecnologia avanzata di stampa ad alta definizione consente di riprodurre un numero illimitato di colori e sfumature, ottenendo così soluzioni di qualità eccellente anche su un materiale morbido e taffato come il tappeto.

La collezione **Carpetia Royal** presenta supporti di grande pregio, Luxury e Luxury Soft, ancora più soffici e luminosi, disponibili su modelli di grandi dimensioni, sia rotondi che rettangolari.

Instabilelab propone il miglior posizionamento della grafica per valorizzarne il disegno a seconda della dimensione del tappeto, ma è inoltre possibile richiedere una personalizzazione secondo i propri gusti ed esigenze.

Designed in the context of the Custom-Me project, Instabilelab carpets are so distinctive and strong with their graphic and decorative impact that they create an independent collection, perfect to enhance any type of furniture.

Advanced high-definition printing technology allows an unlimited number of colours and shades to be reproduced, resulting in excellent quality solutions even on a soft, textured material like carpet.

*The **Carpetia Royal** collection features even softer and brighter Luxury and Luxury Soft supports, available on large round and rectangular models.*

Instabilelab offers the best placement of graphics to enhance the design according to the size of the carpet, although it is also possible to request customisation according to individual tastes and requirements.





VELLUTO WALLPAPER

Le creazioni Instabilelab nascono sempre dal desiderio di creare habitat unici, alternativi, esclusivi e dal forte impatto scenografico.

In occasione del Salone del Mobile di Milano 2022, il team Instabilelab ha creato e scelto dieci nuove grafiche su cui presentare un nuovo parato in tessuto, inedito e prezioso: **Velluto**.

Una raffinatissima carta da parati che ricorda le trame e le percezioni tattili morbide del velluto: un supporto pregiato che si distingue dai consueti parati, ideale per esaltare le pareti donando agli ambienti un aspetto elegante e lussuoso.

Una finitura tessutata che dona al parato una sensazione carezzevole di inaspettata morbidezza.

Instabilelab's creations arise from the desire to create unique, alternative, exclusive living spaces with a strong visual appeal.

*At the Salone del Mobile di Milano 2022, Instabilelab's team has designed and chosen ten new graphics on which to present a new, original and precious fabric wallpaper: **Velluto**.*

A very refined wallpaper that recalls the soft textures and feeling of velvet: a precious support that stands out from the usual wallpapers, ideal for enhancing walls and giving rooms an elegant and luxurious look.

A textured finish that gives the wallpaper a pleasant sensation of unexpected softness.





ROYAL LOCATIONS

Milano
Collection

FRIDA 01

Audace





EGO 01

Artistic





BEE 01

Audace





BOTTLE 01

Artistic





JARDIN 01

Artistic





BOTERO 01

Artistic

details p. 43



GRACE 01

Nuances





KARMA 01

Audace





PLAN 01

Artistic





60's 01

Artistic





CARPETIA ROYAL DIMENSIONS

Milano
Collection

FRIDA 01

Audace



400 x 300 cm



ø 300 cm



350 x 250 cm



ø 250 cm



300 x 200 cm



ø 200 cm



240 x 170 cm

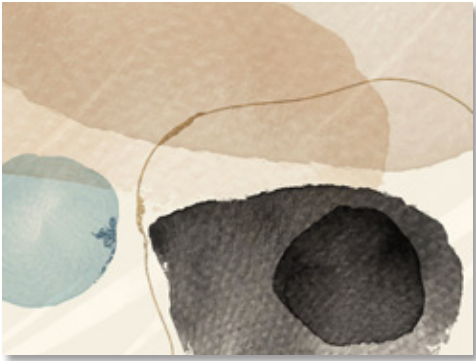
SCELTA GRAFICA GRAPHIC CHOICE

La scelta di porzioni di grafica differente permette di creare tappeti di diversa estetica e con predominanti di colore più chiare o più scure.

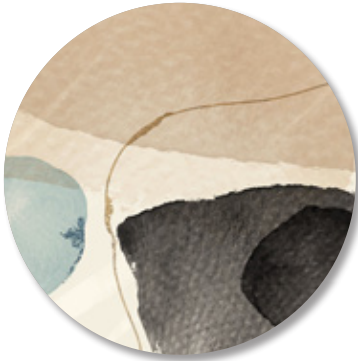
The choice of different graphic sections makes it possible to create carpets with different aesthetics and predominantly lighter or darker colours.

EGO 01

Artistic



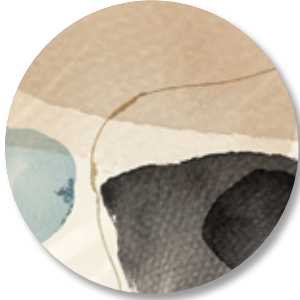
400 x 300 cm



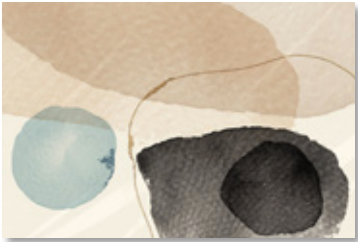
ø 300 cm



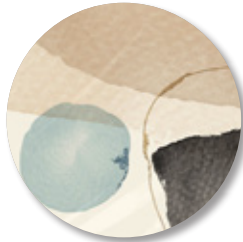
350 x 250 cm



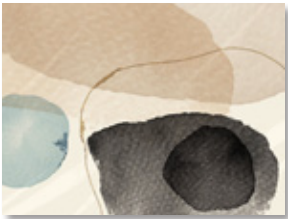
ø 250 cm



300 x 200 cm



ø 200 cm



240 x 170 cm

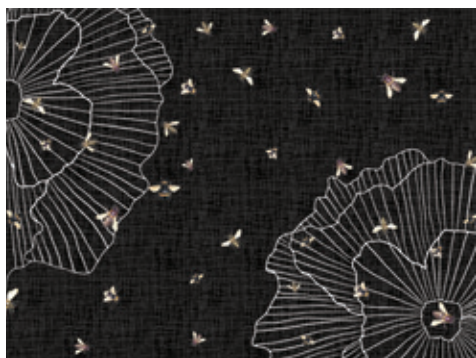
BORDATURA EDGING

I tappeti prevedono la finitura con bordo di colore in tono con la predominante della grafica.

The carpets are finished with a border in a colour matching the predominant graphic.

BEE 01

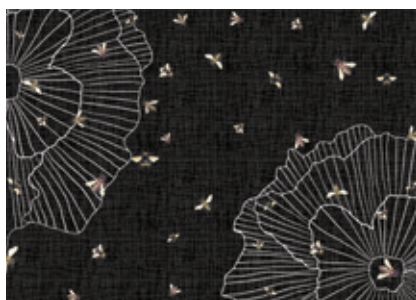
Audace



400 x 300 cm



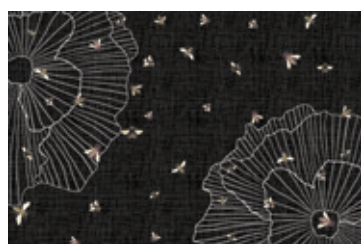
ø 300 cm



350 x 250 cm



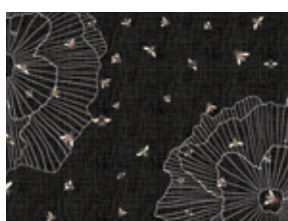
ø 250 cm



300 x 200 cm



ø 200 cm



240 x 170 cm

SCelta GRAFICA GRAPHIC CHOICE

La scelta di porzioni di grafica differente permette di creare tappeti di diversa estetica e con predominanti di colore più chiare o più scure.

The choice of different graphic sections makes it possible to create carpets with different aesthetics and predominantly lighter or darker colours.

BOTTLE 01

Artistic



400 x 300 cm



ø 300 cm



350 x 250 cm



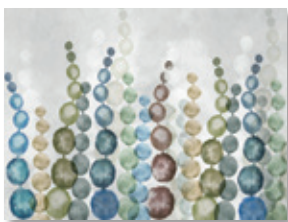
ø 250 cm



300 x 200 cm



ø 200 cm



240 x 170 cm

BORDATURA EDGING

I tappeti prevedono la finitura con bordo di colore in tono con la predominante della grafica.

The carpets are finished with a border in a colour matching the predominant graphic.

JARDIN 01

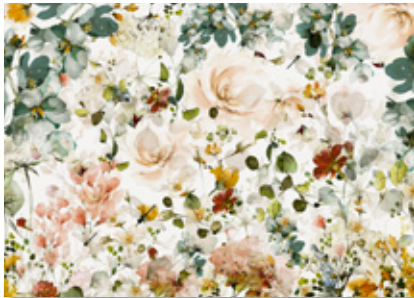
Artistic



400 x 300 cm



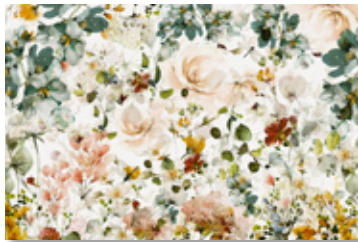
ø 300 cm



350 x 250 cm



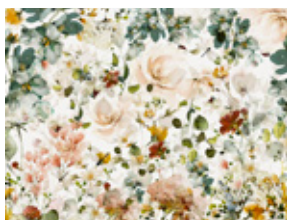
ø 250 cm



300 x 200 cm



ø 200 cm



240 x 170 cm

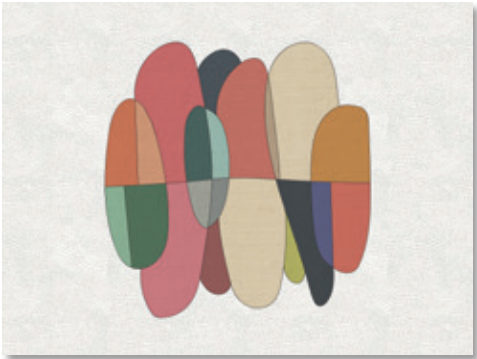
SCelta GRAFICA GRAPHIC CHOICE

La scelta di porzioni di grafica differente permette di creare tappeti di diversa estetica e con predominanti di colore più chiare o più scure.

The choice of different graphic sections makes it possible to create carpets with different aesthetics and predominantly lighter or darker colours.

BOTERO 01

Artistic



400 x 300 cm



ø 300 cm



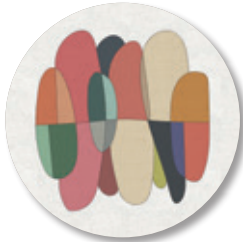
350 x 250 cm



ø 250 cm



300 x 200 cm



ø 200 cm



240 x 170 cm

BORDATURA EDGING

I tappeti prevedono la finitura con bordo di colore in tono con la predominante della grafica.

The carpets are finished with a border in a colour matching the predominant graphic.

GRACE 01

Nuances



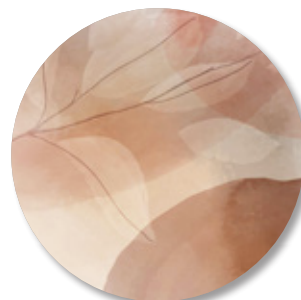
400 x 300 cm



ø 300 cm



350 x 250 cm



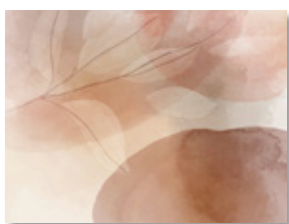
ø 250 cm



300 x 200 cm



ø 200 cm



240 x 170 cm

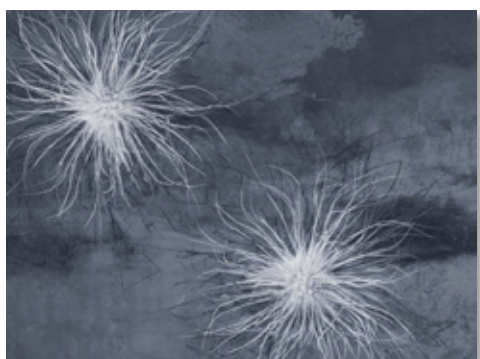
SCelta GRAFICA GRAPHIC CHOICE

La scelta di porzioni di grafica differente permette di creare tappeti di diversa estetica e con predominanti di colore più chiare o più scure.

The choice of different graphic sections makes it possible to create carpets with different aesthetics and predominantly lighter or darker colours.

KARMA 01

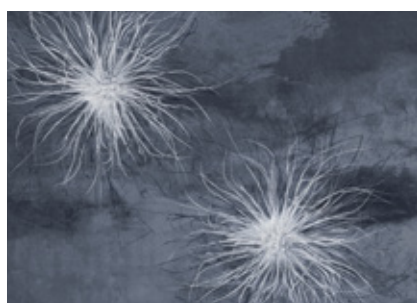
Audace



400 x 300 cm



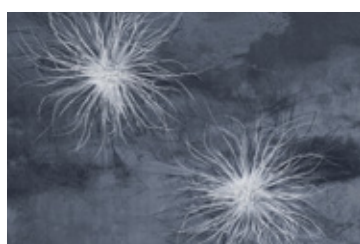
ø 300 cm



350 x 250 cm



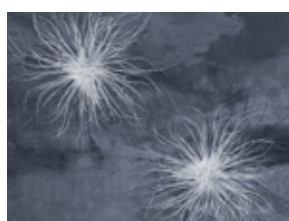
ø 250 cm



300 x 200 cm



ø 200 cm



240 x 170 cm

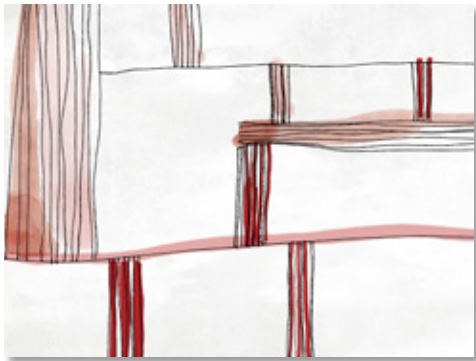
BORDATURA EDGING

I tappeti prevedono la finitura con bordo di colore in tono con la predominante della grafica.

The carpets are finished with a border in a colour matching the predominant graphic.

PLAN 01

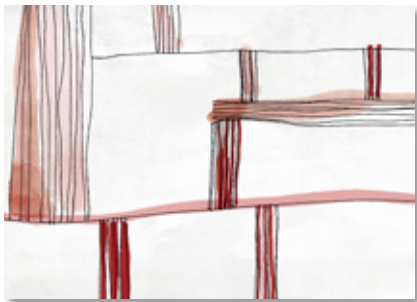
Artistic



400 x 300 cm



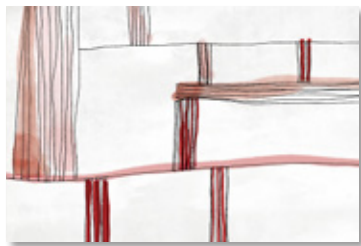
ø 300 cm



350 x 250 cm



ø 250 cm



300 x 200 cm



ø 200 cm



240 x 170 cm

SCELTA GRAFICA GRAPHIC CHOICE

La scelta di porzioni di grafica differente permette di creare tappeti di diversa estetica e con predominanti di colore più chiare o più scure.

The choice of different graphic sections makes it possible to create carpets with different aesthetics and predominantly lighter or darker colours.

60's 01

Artistic



400 x 300 cm



ø 300 cm



350 x 250 cm



ø 250 cm



300 x 200 cm



ø 200 cm



240 x 170 cm

BORDATURA EDGING

I tappeti prevedono la finitura con bordo di colore in tono con la predominante della grafica.

The carpets are finished with a border in a colour matching the predominant graphic.

GRAPHICS

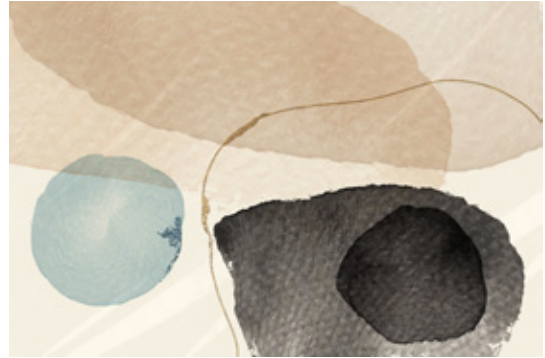
Milano
Collection

WALLPAPER GRAPHICS



FRIDA 01

p. 16-17



EGO 01

p. 18-19



BEE 01

p. 20-21



BOTTLE 01

p. 22-23

ADATTAMENTO GRAFICO

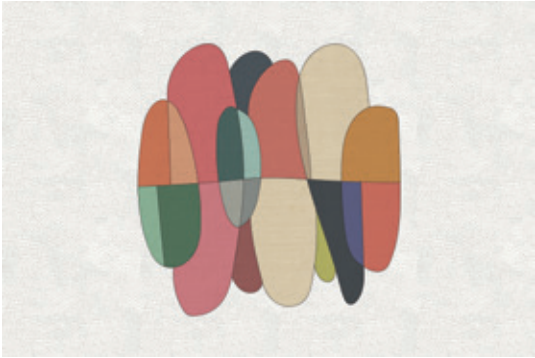
Le grafiche Instabilelab sono progettate in dimensione **600 x 400 cm** ma ogni progetto prevede l'adattamento personalizzato sulla parete del cliente, con ridimensionamento totale o parziale della grafica.

GRAPHIC ADAPTATION

Instabilelab graphics are designed in 600 x 400 cm size, but each project provides for customised adaptation to the customer's wall, with total or partial resizing of the graphics.



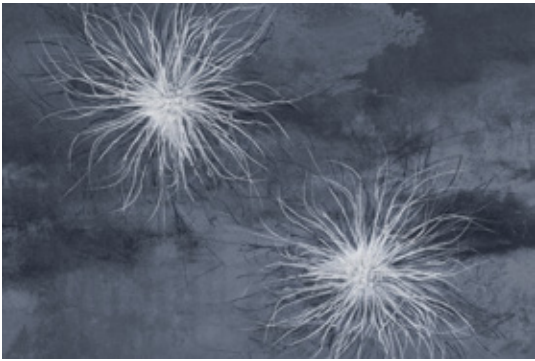
JARDIN 01
p. 24-25



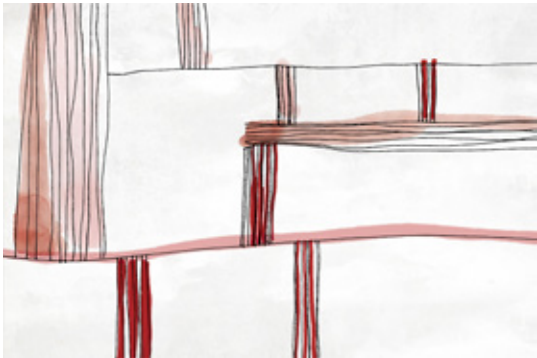
BOTERO 01
p. 27



GRACE 01
p. 28-29



KARMA 01
p. 30-31



PLAN 01
p. 32-33



60's 01
p. 34-35



CARPETIA ROYAL COLLECTION

LUXURY 1.6

MANUFACTURING PROCESS:	DIN ISO 2424	TUFTED 1/10"
COLOR:	DIN ISO 2424	CHROMOJET PRINT
PILE MATERIAL:		100% POLYAMID PA 6.6
SECONDARY BACKING:	DIN ISO 2424	FELT BACK
TOTAL WEIGHT:	ISO 8543	3085 g/m ² (approx.)
TOTAL THICKNESS:	ISO 1765	10,9 mm (approx.)

PHYSICAL PROPERTIES:		
FIRE RATING	DIN EN 13501-1	B _{f1} -s1 *

* glued on massive mineral concrete



LUXURY SOFT 11.5

MANUFACTURING PROCESS:	DIN ISO 2424	TUFTED 1/10"
COLOR:	DIN ISO 2424	CHROMOJET PRINT
PILE MATERIAL:		100% POLYAMID PA 6.6
SECONDARY BACKING:	DIN ISO 2424	FELT BACK
TOTAL WEIGHT:	ISO 8543	2782 g/m ² (approx.)
TOTAL THICKNESS:	ISO 1765	10,7 mm (approx.)

PHYSICAL PROPERTIES:		
FIRE RATING	DIN EN 13501-1	B _{f1} -s1 *

* glued on massive mineral concrete



VELLUTO WALLPAPER MATERIAL

CHARACTERISTICS

WALLPAPER: TNT WHIT VELVET EFFECT

COMPONENTS: 85% POLYESTER, 15% COTTON

GRAMMAGE: 390 g/m²

INK: GREENGUARD GOLD CERTIFIED PRODUCT

LIGHT FASTNESS: 4-5

ABRASION RESISTANCE: 50.000 cycles - washable

ECOLOGICAL MATERIAL

Environmental friendly and all our raw materials are from 1st quality choice.

Production made in conformity to the valid EC regulation:

- No release of: formaldehyde
- No release of: heavy metals
- No release of: vinyl chloride monomer

Products manufactured in conformity to sanitary & epidemiologic EC regulation.





INSTABILELAB®

INSTABILELAB srl

Sede Operativa : Via Rivale, 59 - 30036 - Santa Maria di Sala - VENEZIA - Italy

Sede Legale: Via Chiesa, 39 - 30035 - Mirano - VENEZIA - Italy

Tel. +39 041 5760611 - info@instabilelab.it

The Netherlands Showroom

ETC Design Center - Randweg 20 - 4104 AC Culemborg