



INSTABILELAB®

ART IN THE WALLPAPER

sfumature di **Magnolia**

sfumature di **Magnolia**

Sfumature. Colori, natura, figure, ombre, voci e sguardi, le sfumature fanno la differenza e le differenze rendono interessante la vita.

Quando non si colgono le sfumature tutto appare piatto e senza emozione.

Instabilelab si caratterizza da sempre per uno stile ben definito, carico di contrasti netti, forme e colori forti, ma spesso la visione del mondo è per sua natura mutevole e indefinita.

Da qui l'importanza di ritornare a cogliere le sfumature, partendo dalle delicate sfumature di un fiore per arrivare ai contrasti più forti e audaci del nostro estro creativo. Nella mancanza di definizione, bisogna saper cogliere le ombreggiature, i chiaroscuri, nei quali talvolta c'è l'essenza delle cose.

Shades. Colors, nature, figures, shadows, voices and looks, nuances make the difference and differences make life interesting.

When you don't perceive the nuances everything appears flat and without emotion.

Instabilelab has always been characterized by a well-defined style, full of sharp contrasts, strong shapes and colors, but often the vision of the world is by its nature changeable and undefined.

Hence the importance of returning to capture the nuances, starting from the delicate shades of a flower to the stronger and bolder contrasts of our creative flair. In the lack of definition, we must be able to see the shadows, the chiaroscuro, in which sometimes there is the essence of things.

index

GRAPHICS INDEX	07
ABOUT US	09
MATERIALS	10
COLLECTIONS	
NUANCES	15
ARTISTIC	89
AUDACE	125
BE YOUNG	171
VARIANTS	197



Nuances, soft and elegant style.



Artistic, pictures and illustrations.



Audace, be strong be colored.



Be Young, not only kids.



graphics index

NUANCES

AGED	20	198
ALIS	72	205
ARMILLA	59	203
ASTRUSO	39	201
AURORA	84	206
BARENA	80	206
BLACK POND	50	202
CALIGÒ	22	198
CARAIBI	44	201
DELICACY	85	206
DRAGON TREE	23	199
ELEGANCE	27	199
EVANESCENT	16	198
FALGUERA	55	203
FLORIDA	34	200
FLOSS	76	205
FRONDE	18	198
GINCO	32	200
HIDDEN HEART	28	199
KAFFIR	68	204
LADIES	52	202
LEXA	40	201
LIKE ME	60	203
LINDEN TREE	64	204
LOTUS	56	203
MIRANDA	54	202
MOSES	24	199
OLD WINDOWS	71	205
PAESAGGI	48	202
PAPAVERI	75	205
PATH	70	204
PETITS FLEURS	38	200
SAHARA	43	201
SHADOW	82	206
TIGER	66	204
TROPICANA	86	207
VINTAGE GARDEN	36	200

ARTISTIC

ANIME	116	213
AQUARELA	115	213
BOTANICA	120	214
BRUXELLES	103	211
CALAVERA	114	212
DUNE	94	210
GLIFI	108	212

INVISIBLE CITY	96	210
LENTAMENTE	92	210
LUNATICA	99	211
MOSAICA	98	210
NEL VUOTO	122	213
OLD TRAVEL	104	211
RUNWAY	112	212
SUNSHINE	110	212
TOPOGRAFIKA	119	213
VENERE APRÉS-MIDI	100	211

AUDACE

AMMONITI	130	218
ARE YOU SURE?	166	223
ARMONIA	152	221
AWAY FROM ME	140	219
BLACK DALIA	146	220
CEMENT STEEL	168	223
CORAL	155	221
IARUMAS	165	222
IMAGINE	151	221
LA SANTA	144	220
LOTS OF GREEN	148	220
METROPOLITAN	136	219
MONSFERA	150	220
PLUVIA	135	219
ROCK YOU	160	222
ROSE ET NOIR	128	218
SERRA	134	218
STONE	156	221
VERDE FELCE	132	218
VIRTUAL GAME	162	222
VULCANO	164	222
WHALE	139	219

BE YOUNG

ANACLETO	174	226
BUBBLE BUBBLE	190	227
COLOR FISH	186	227
FANTASIE	178	226
IL GIGANTE	180	226
IL MIO ARCOBALENO	194	228
NEDY	191	228
NODI	192	228
PARIS	188	227
SHIRT	183	227
THE BOATS	176	226



ABOUTUS

Un'azienda veneziana dall'inesauribile creatività, Instabilelab propone la propria personale ed inedita interpretazione della carta da parati rimiscolando idee e stili diversi, creando abbinamenti estetico-concettuali inediti, per dare reale valore e personalità agli spazi abitativi.

Innumerevoli sono i pattern e le atmosfere che l'azienda presenta anche grazie allo studio di texture e di nuove modalità di impiego e applicazione. Instabilelab, infatti, supera i limiti dell'utilizzo del parato, che progetta in un'ottica di continuum grafico realizzabile attraverso una serie di prodotti e tessuti dedicati a chi vuole realizzare un'atmosfera più che un ambiente.

Non solo creatività ma anche tecnologia: l'azienda ha il know how necessario per riprodurre le sue grafiche su diversi tipi di supporto e per coprire ogni aspetto del living indoor (pareti, soffitti, pavimenti, zone umide, elementi d'arredo, tessuti) e outdoor, grazie all'impiego di rivestimenti resistenti agli agenti atmosferici.

A Venetian company of inexhaustible creativity, Instabilelab presents its own personal and original interpretation of wallpaper, mixing different ideas and styles, creating new aesthetic-conceptual combinations to give real value and personality to living spaces.

The company presents countless patterns and atmospheres, also thanks to the study of textures and new methods of use and application. Instabilelab goes beyond the limits of the use of wallpaper, which it designs with a graphic continuum that can be achieved through a series of products and fabrics dedicated to those who want to create an atmosphere rather than an environment.

Not only creativity but also technology: the company has the necessary know-how to reproduce its graphics on different types of support and to cover every aspect of indoor living (walls, ceilings, floors, wet areas, furnishing elements, fabrics) and outdoor, thanks to the use of weather-resistant coatings.

MATERIALS

La nuova concezione di carta da parati si fa spazio nel mondo del design e della progettazione di interni secondo un progetto creativo in grado di esprimere stili, tendenze e suggestioni. Materiale dal grande effetto estetico permette di decorare ogni ambiente della casa creando bellissime scenografie.

Instabilelab sceglie di lasciare estrema libertà nella scelta delle grafiche permettendone la stampa su qualunque tipo di supporto (eccetto la carta Prestige che per il suo caratteristico colore metallico prevede grafiche dedicate).

La carta vinilica, disponibile in vari tipi di texture, è consigliata per gli ambienti domestici che escludano presenza intensa di acqua e vapore, mentre la versione su struttura in fibra di vetro, trattata in fase di posa con resine specifiche, è adatta agli ambienti più umidi come bagno e cucina comprese le docce. A questi supporti si aggiunge la fibra di vetro per esterni, la carta Acustica con proprietà di fonoassorbimento e la carta Green ottenuta senza utilizzo di pvc.

The new concept of wallpaper makes its way into the world of design and interior planning according to a creative project capable of expressing styles, trends and suggestions.

Material with a great aesthetic effect allows to decorate every room of the house creating beautiful sceneries.

Instabilelab chooses to leave extreme freedom in the choice of graphics, allowing the printing on any type of support (except Prestige wallpaper that, due to its characteristic metallic color, provides dedicated graphics).

Vinyl paper, available in various types of texture, is recommended for domestic environments that exclude the intense presence of water and steam, while the version on a fiberglass structure, treated during installation with specific resins, is suitable for more humid environments such as bathrooms and kitchens, including showers.

In addition to these supports, there is fiberglass for outdoor use, Acustica wallpaper with soundproofing properties and Green wallpaper obtained without the use of PVC.



GREEN



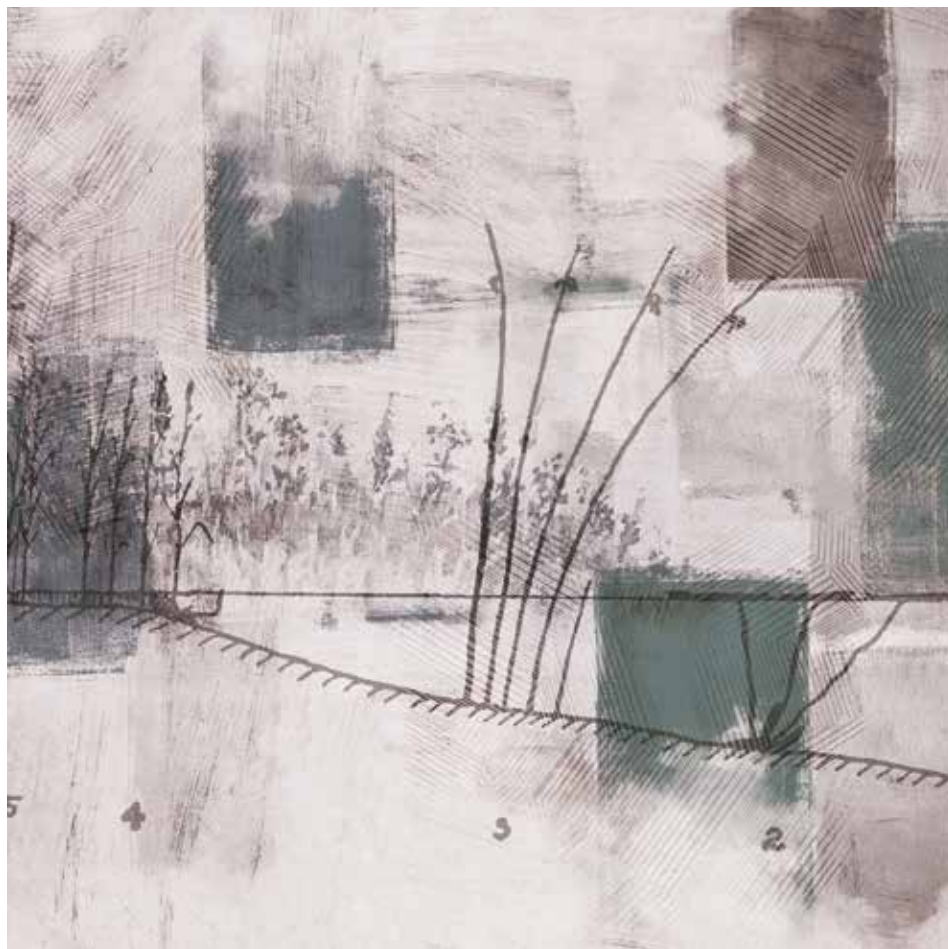
PRESTIGE



TEX PRESTIGE





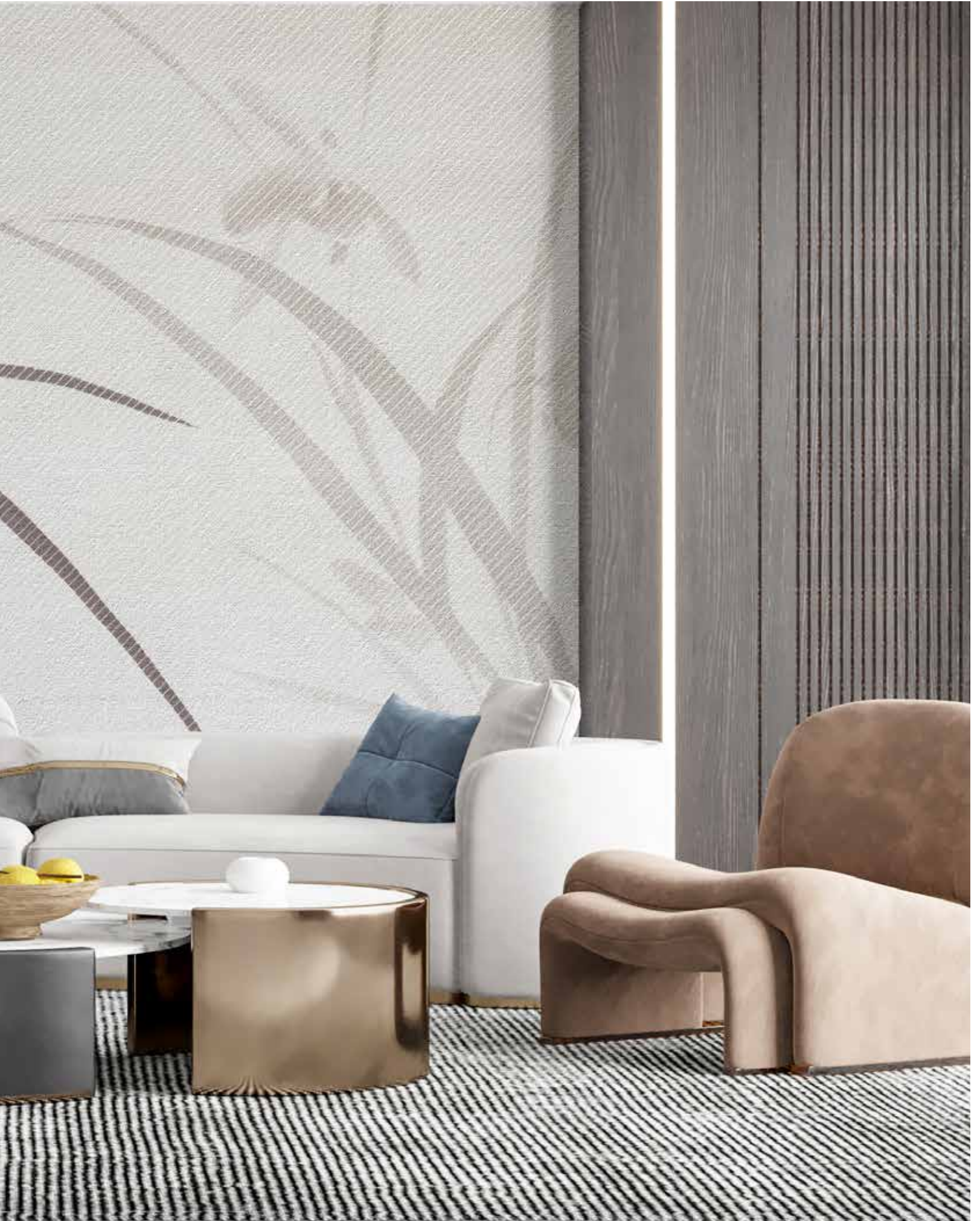


NUANCES

EVANESCENT 01

Nuances





FRONDE 01

Nuances









CALIGÒ 01

Nuances





DRAGON TREE 01

Nuances

variants p. 199

MOSES 01

Nuances





ELEGANCE 01

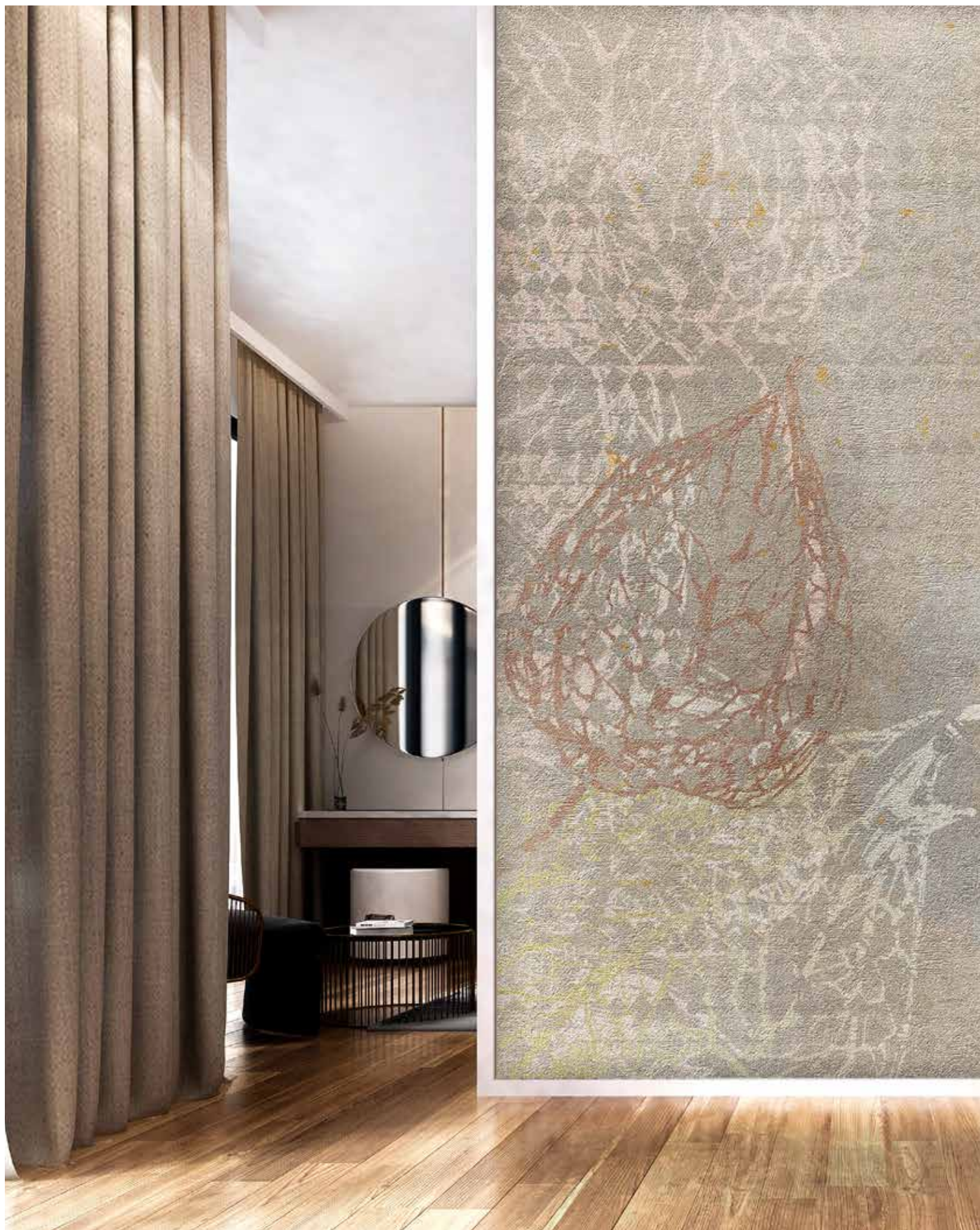
Nuances

variants p. 199



HIDDEN HEART 01

Nuances





*La realidad se encuentra
en la luz y la oscuridad.*

Pablo Picasso

GINCO 01

Nuances





FLORIDA 01

Nuances





VINTAGE GARDEN 01

Nuances

variants p. 200





PETITS FLEURS 01

Nuances





ASTRUSO 01

Nuances

variants p. 201

LEXA 01

Nuances





SAHARA 01

Nuances

variants p. 201



CARAIBI 01

Nuances





*La sostanza sta
nelle sfumature.*

Alessandro Morandotti

PAESAGGI 01

Nuances





BLACK POND 01

Nuances









MIRANDA 01

Nuances





FALGUERA 01

Nuances

variants p. 203

LOTUS 01

Nuances





ARMILLA 01

Nuances

variants p. 203



LIKE ME 01

Nuances





*Different shades of life make
the painting more beautiful.*

Michael Dolan

LINDEN TREE 01

Nuances





TIGER 01

Nuances









PATH 01

Nuances





OLD WINDOWS 01

Nuances

variants p. 205

ALIS 01
Nuances





PAPAVERI 01

Nuances

variants p. 205



FLOSS 01

Nuances





*Un colore lo puoi descrivere,
una sfumatura no.
Le sfumature sono indomabili.*

Instabilelab

BARENA 01

Nuances





SHADOW 01

Nuances





AURORA 01

Nuances





DELICACY 01

Nuances

variants p. 206







ARTISTIC

*Aprende las reglas como
un profesional, para entonces
poder romperlas como artista.*

Pablo Picasso

LENTAMENTE 01

Artistic





DUNE 01

Artistic





INVISIBLE CITY 01

Artistic

variants p. 210

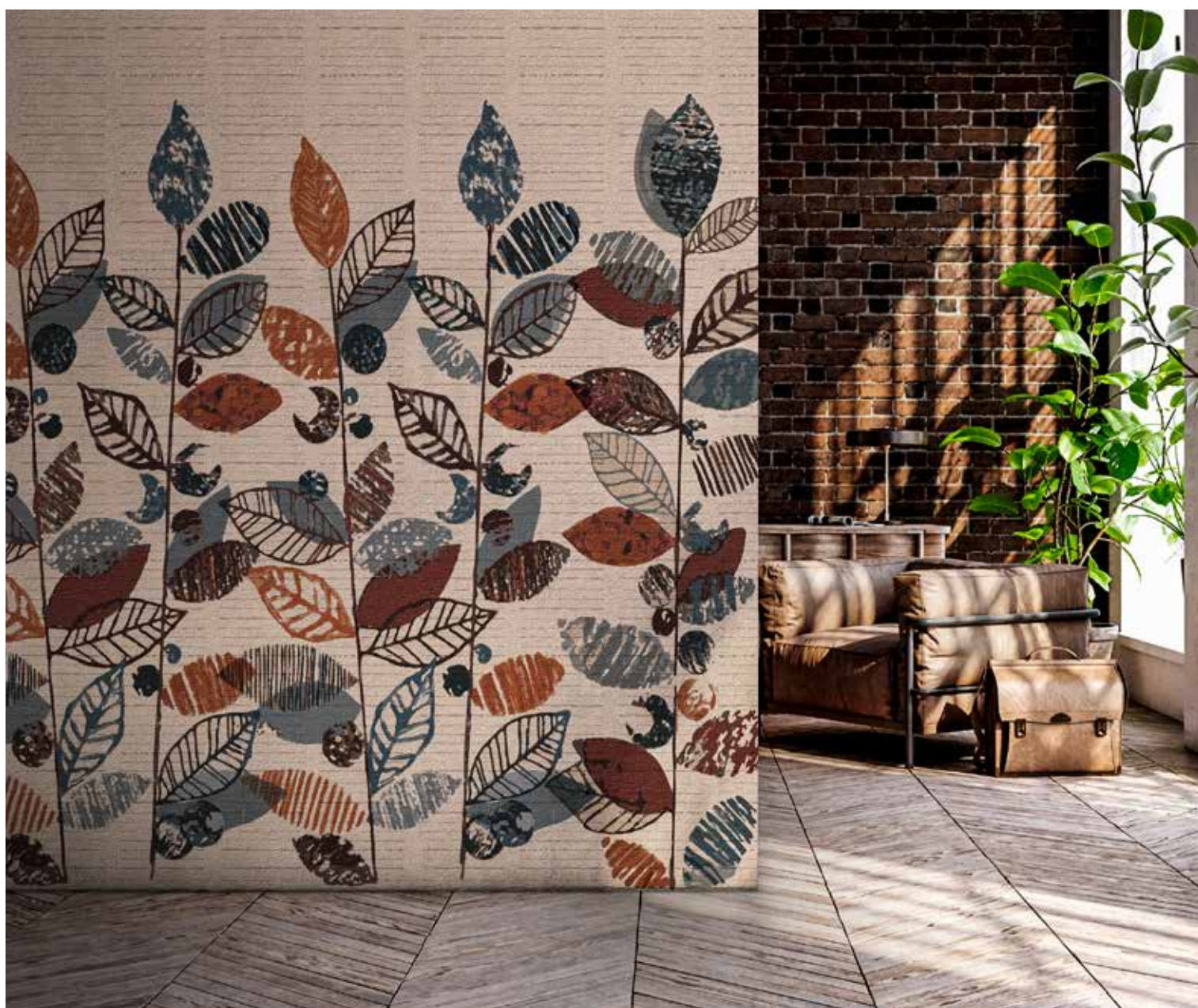




MOSAIKA 01

Artistic





LUNATICA 01

Artistic

variants p. 211

VENERE APRÉS-MIDI 01

Artistic





BRUXELLES 01

Artistic

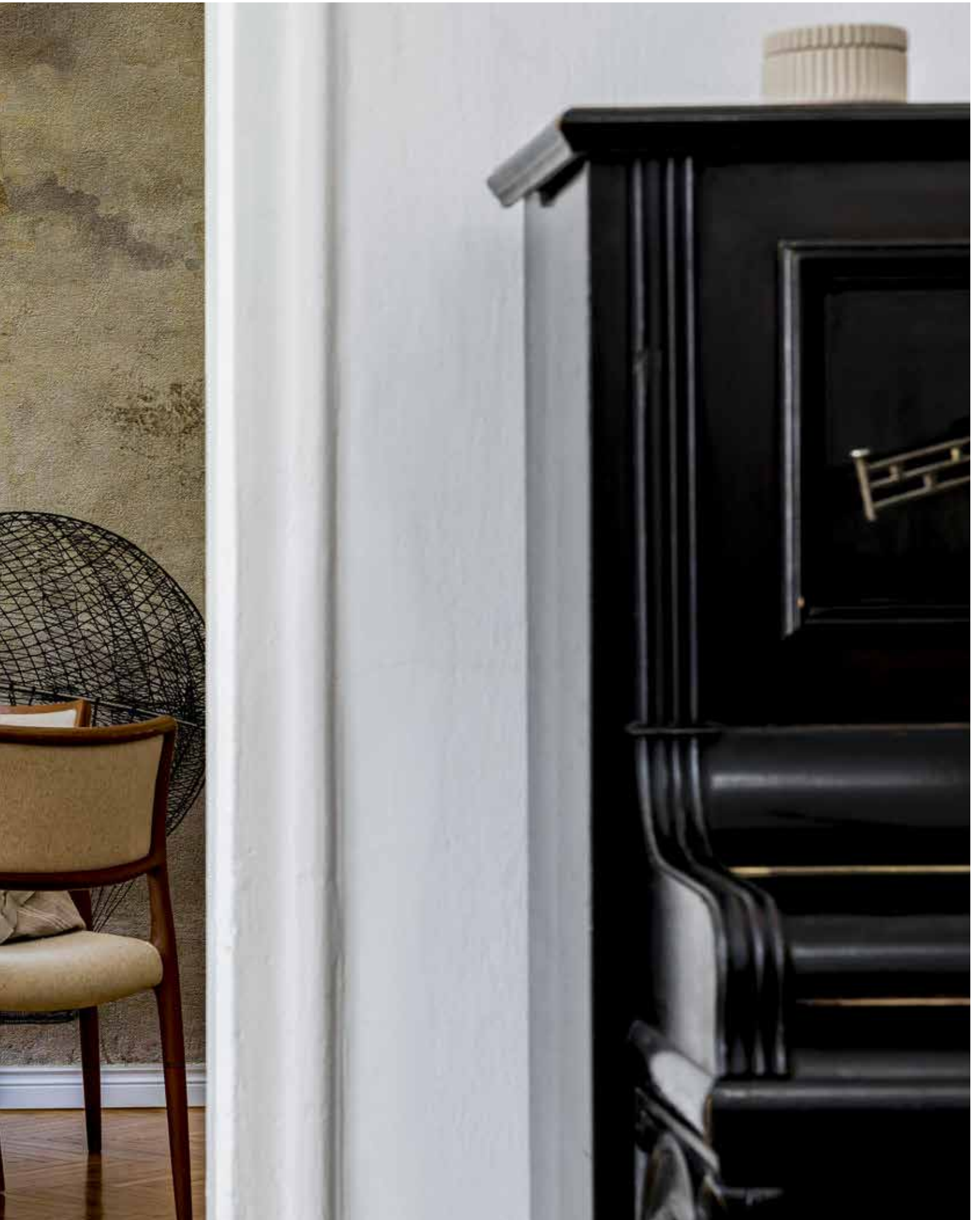
variants p. 211



OLD TRAVEL 01

Artistic





*L'art est ce par quoi les formes
deviennent style.*

André Malraux

GLIFI 01

Artistic





SUNSHINE 01

Artistic



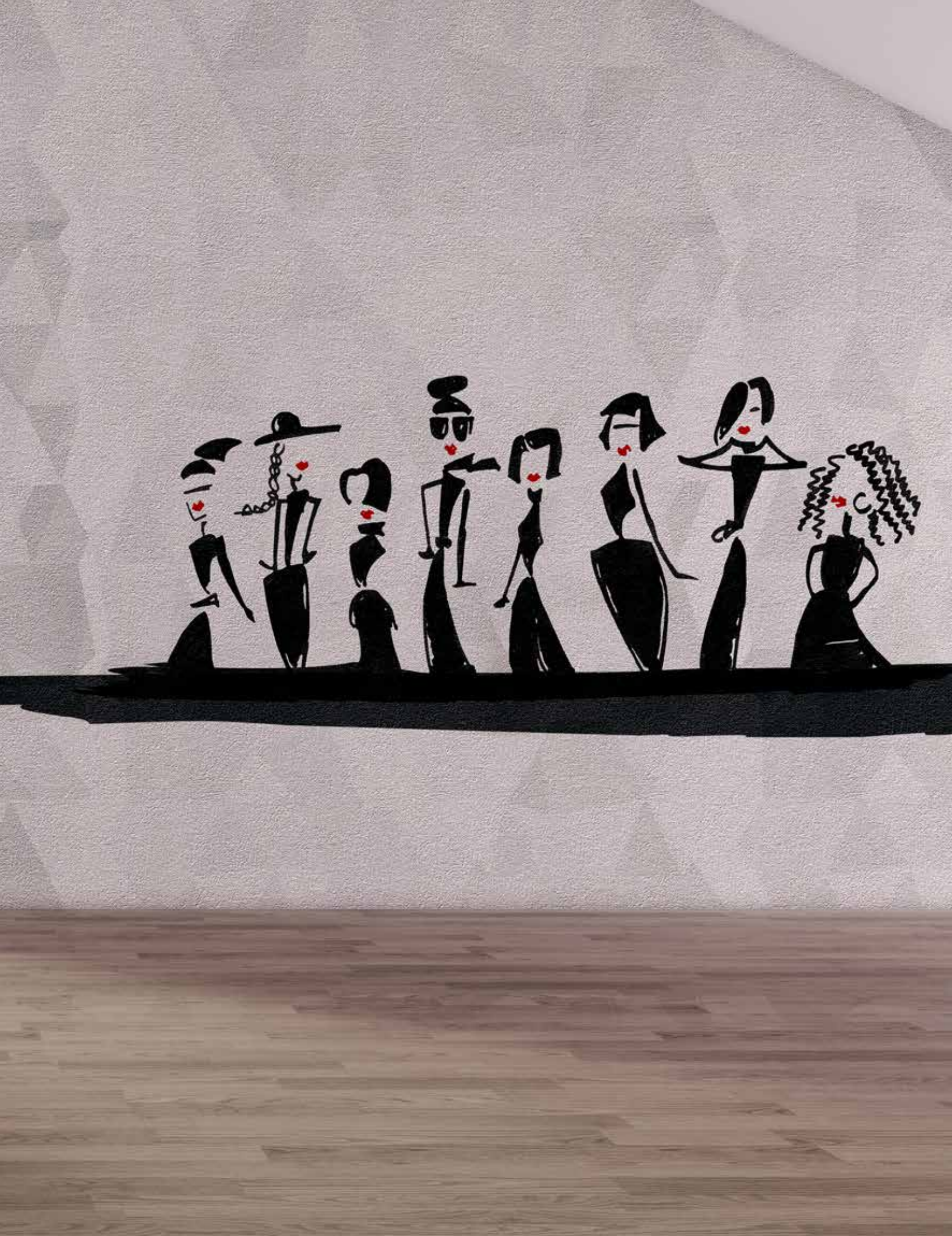


RUNWAY 01

Artistic

variants p. 212





CALavera 01

Artistic





AQUARELA 01
Artistic

variants p. 213

ANIME 01

Artistic





TOPOGRAFIKA 01

Artistic

variants p. 213



BOTANICA 01

Artistic





NEL VUOTO 01

Artistic







AUDACE

*Die schönste Erfahrung,
die wir machen können, ist die
Erfahrung des Unbegreiflichen.*

Albert Einstein

ROSE ET NOIR 01

Audace





AMMONITI 01

Audace





VERDE FELCE 01

Audace

variants p. 218





SERRA 01

Audace





PLUVIA 01

Audace

variants p. 219

METROPOLITAN 01

Audace





WHALE 01

Audace

variants p. 219



AWAY FROM ME 01

Audace





*Life is a daring adventure
or nothing at all.*

Helen Keller

LA SANTA 01

Audace





BLACK DALIA 01

Audace





LOTS OF GREEN 01

Audace

variants p. 220





MONSFERA 01

Audace





IMAGINE 01

Audace

variants p. 221

ARMONIA 01

Audace





CORAL 01

Audace

variants p. 221



STONE 01

Audace





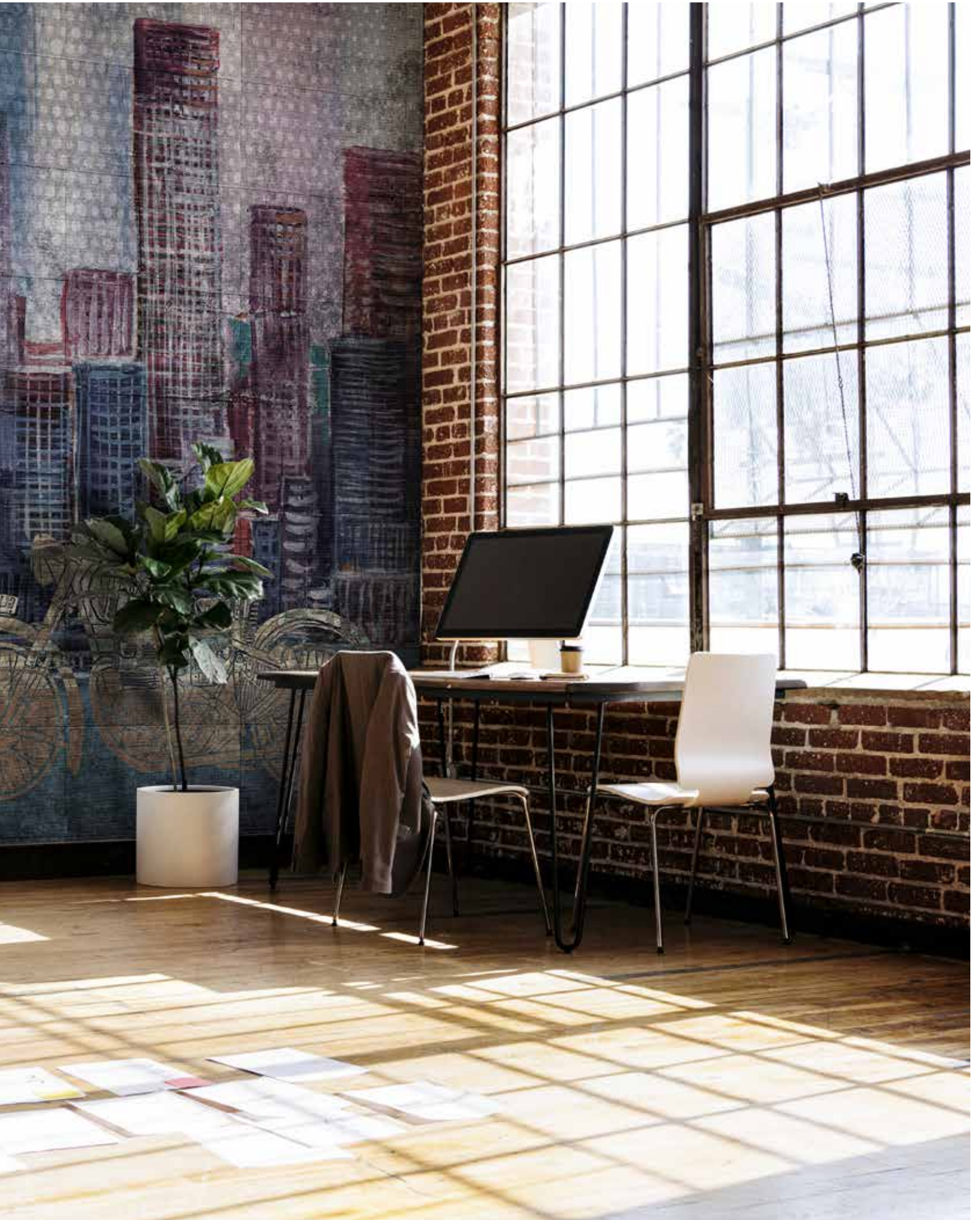
*Ricordati di osare.
Sempre.*

Gabriele D'Annunzio

ROCK YOU 01

Audace





VIRTUAL GAME 01

Audace





VULCANO 01

Audace





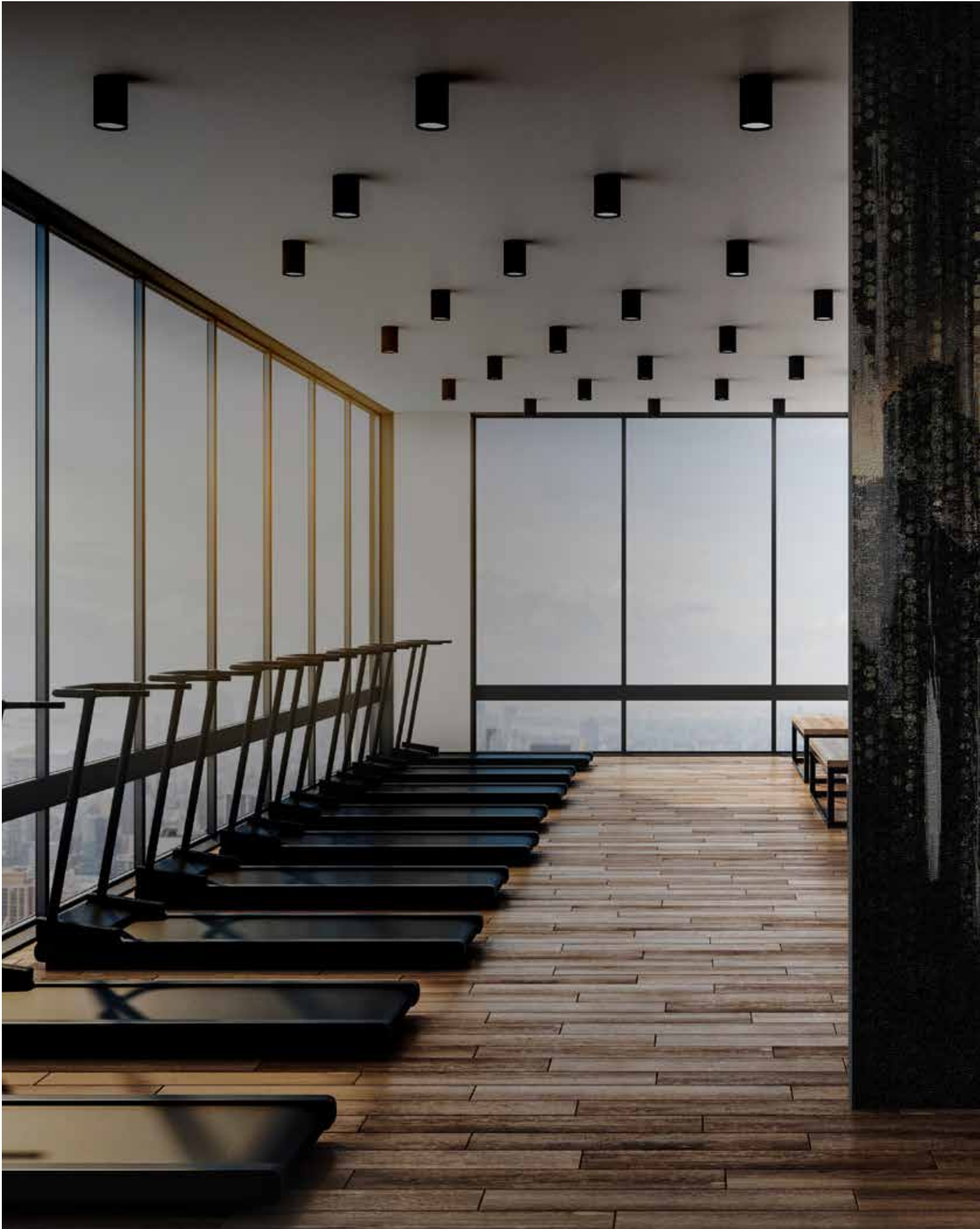
IARUMAS 01

Audace

variants p. 222

ARE YOU SURE? 01

Audace





CEMENT STEEL 01

Audace

variants p. 223





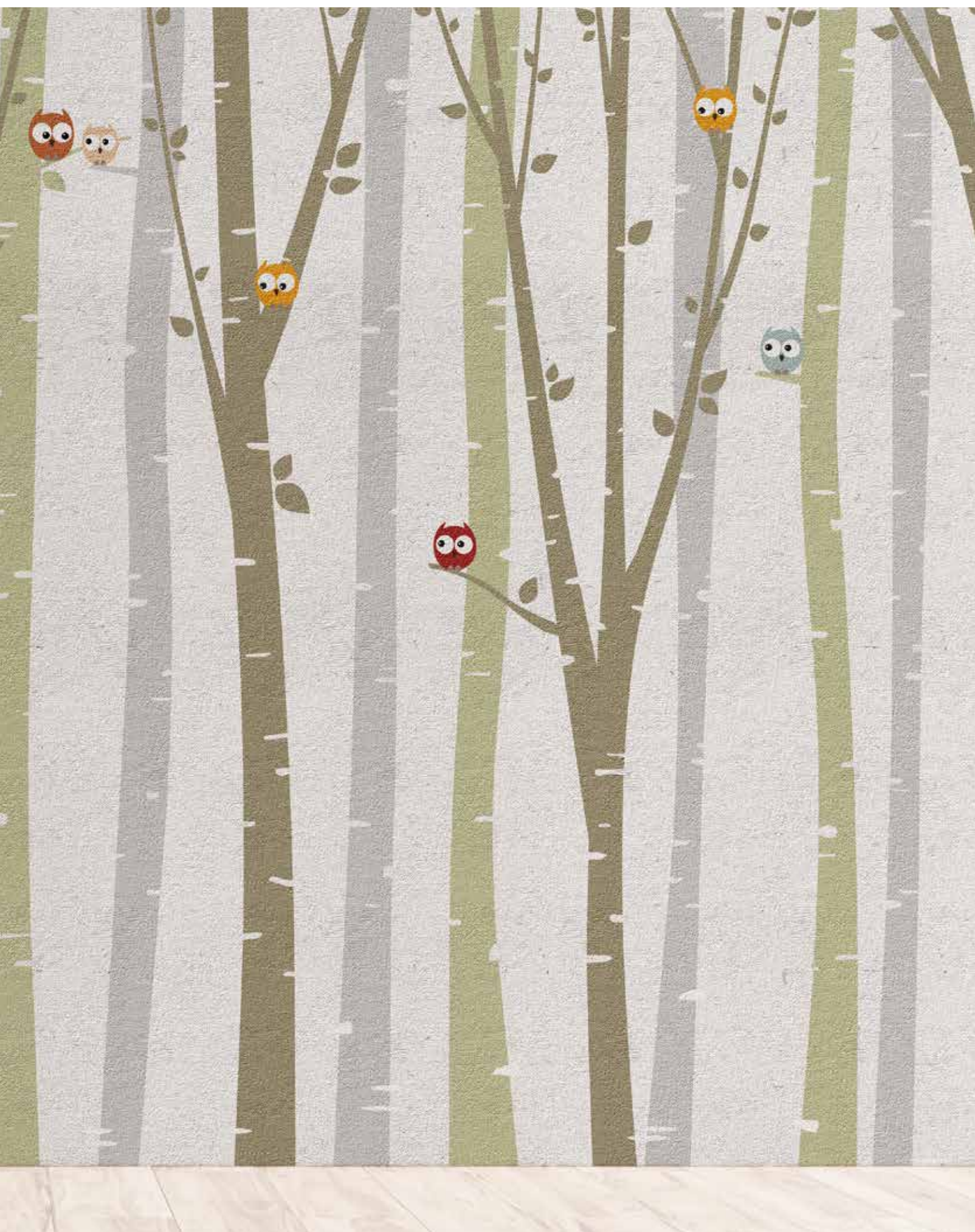


BE YOUNG

ANACLETO 01

Be Young

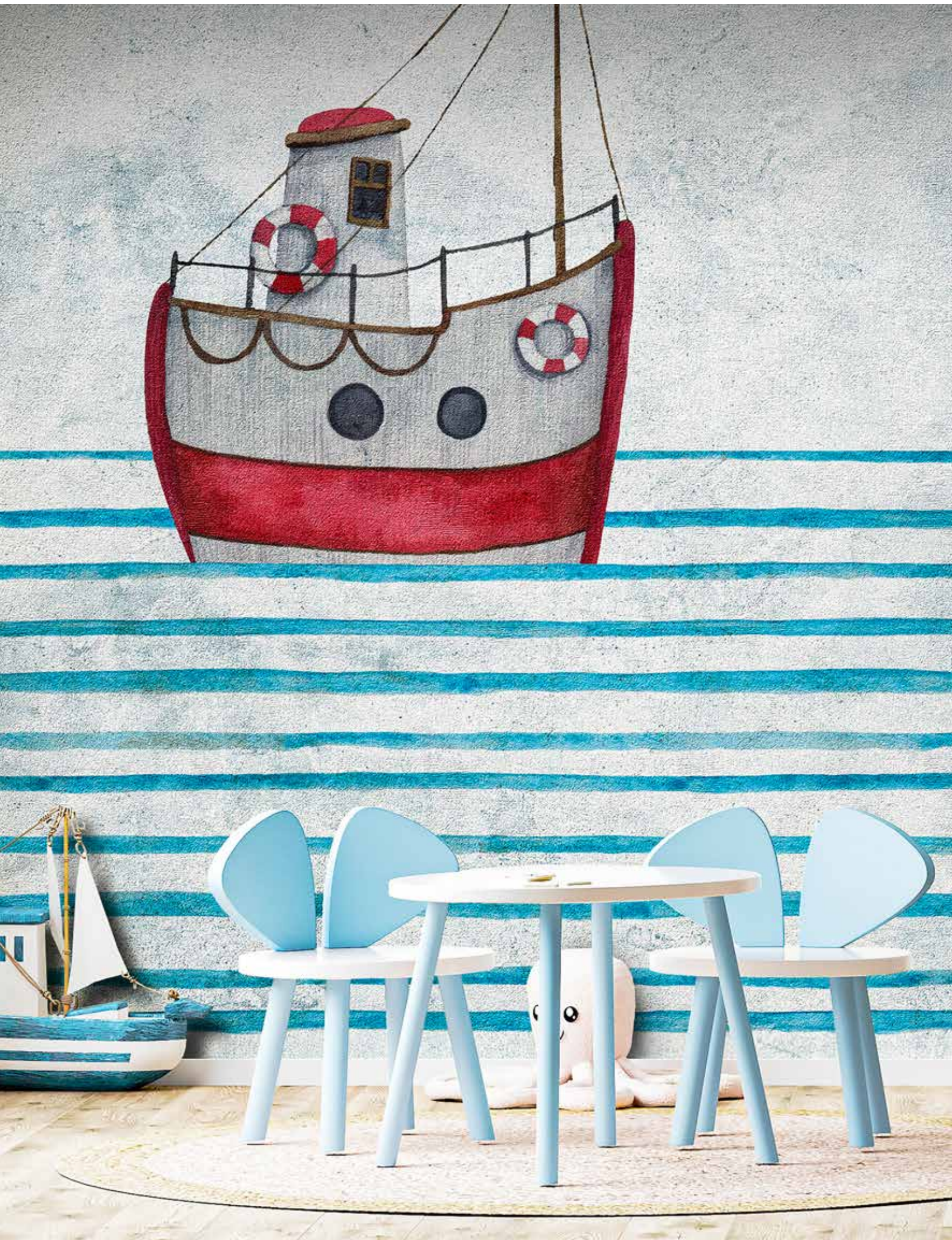




THE BOATS 01

Be Young

variants p. 226





FANTASIE 01

Be Young





FANTASIE 02

Be Young

variants p. 226

IL GIGANTE 01

Be Young





SHIRT 01

Be Young

variants p. 227



*Trust the road that leads
to your dreams.*

Henry David Thoreau

COLOR FISH 01

Be Young





PARIS 01

Be Young





BUBBLE BUBBLE 01

Be Young





NEDY 01

Be Young

variants p. 228

NODI 01

Be Young





IL MIO ARCOBALENO 01

Be Young

variants p. 228





NUANCES

VARIANTS

NUANCES



01



02

EVANESCENT
p. 16-17



01



02

FRONDE
p. 18-19



01



02

AGED
p. 20-21



01



02

CALIGÒ
p. 22

DRAGON TREE
p. 23



01



02

MOSES
p. 24-25



01



02

ELEGANCE
p. 27



01



02

HIDDEN HEART
p. 28-29



01



02

NUANCES



01



02

GINCO
p. 32-33



01



02

FLORIDA
p. 34-35



01



02

VINTAGE GARDEN
p. 36-37



01



02

PETITS FLEURS
p. 38

ASTRUSO

p. 39



01



02

LEXA

p. 40-41



01



02

SAHARA

p. 43



01



02

CARAIBI

p. 44-45



01



02

NUANCES



01



02

PAESAGGI

p. 48-49



01



02

BLACK POND

p. 50-51



01



02

LADIES

p. 52-53



01



02

MIRANDA

p. 54

FALGUERA
p. 55



01



02

LOTUS
p. 56-57



01



02

ARMILLA
p. 59

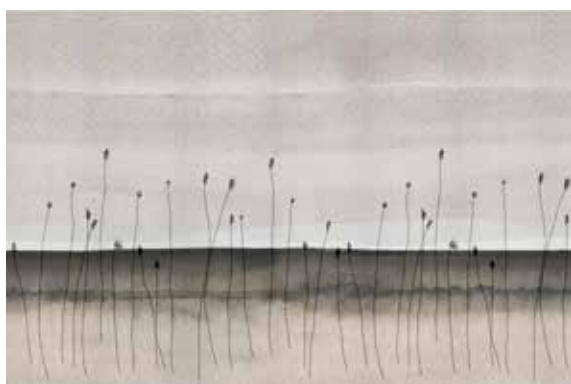


01

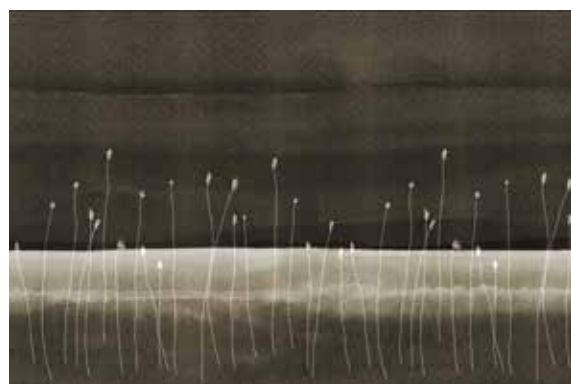


02

LIKE ME
p. 60-61



01

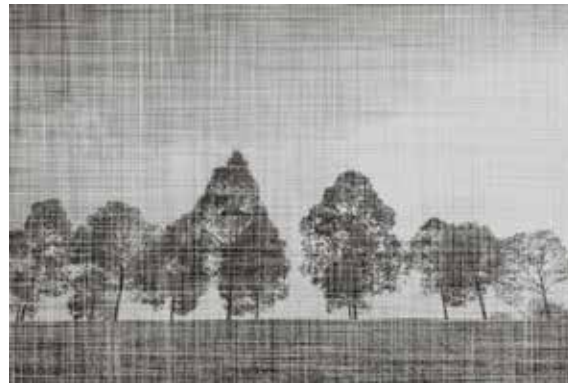


02

NUANCES



01



02

LINDEN TREE
p. 64-65



01



02

TIGER
p. 66-67



01



02

KAFFIR
p. 68-69



01



02

PATH
p. 70

OLD WINDOWS

p. 71



01



02

ALIS

p. 72-73



01



02

PAPAVERI

p. 75



01



02

FLOSS

p. 76-77



01



02

NUANCES



01



02

BARENA

p. 80-81



01



02

SHADOW

p. 82-83



01



02

AURORA

p. 84



01



02

DELICACY

p. 85

TROPICANA
p. 86-87



01



02

ARTISTIC

VARIANTS

ARTISTIC



01



02

LENTAMENTE

p. 92-93



01



02

DUNE

p. 94-95



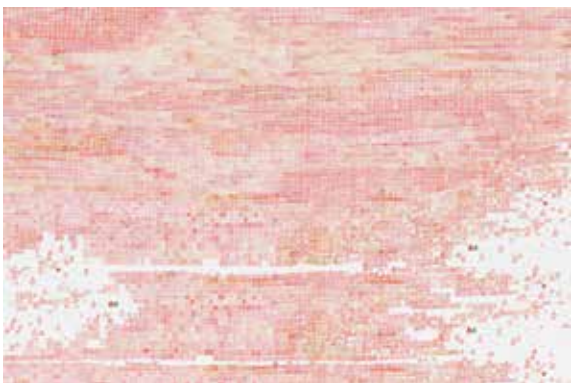
01



02

INVISIBLE CITY

p. 96-97



01



02

MOSAICA

p. 98

LUNATICA

p. 99



01



02

VENERE APRÉS-MIDI

p. 100-101



01



02

BRUXELLES

p. 103



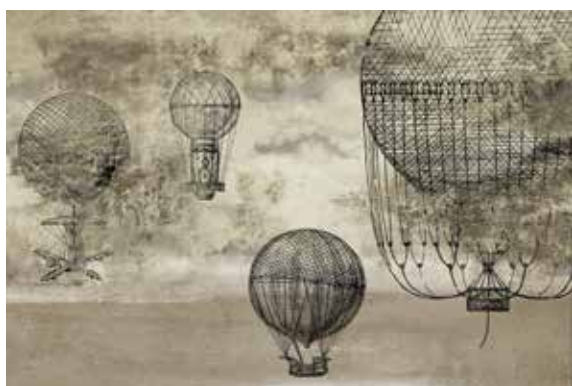
01



02

OLD TRAVEL

p. 104-105



01



02

ARTISTIC



01



02

GLIFI
p. 108-109



01

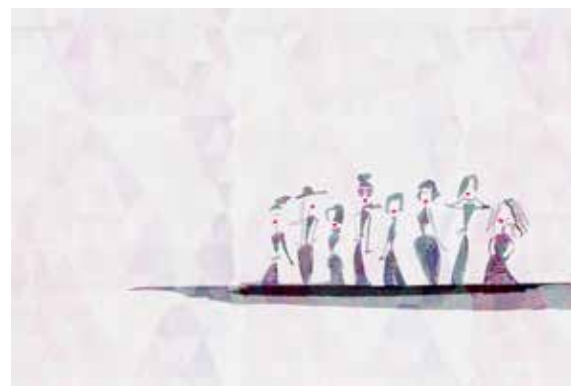


02

SUNSHINE
p. 110-111



01

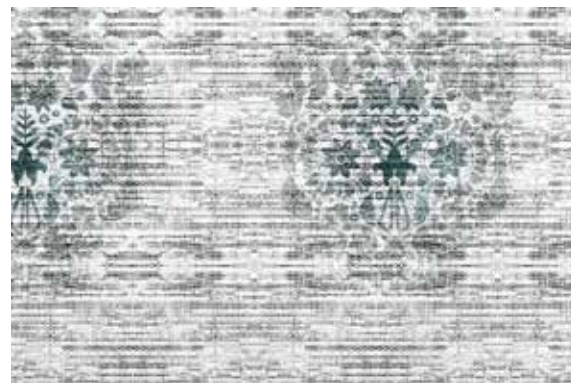


02

RUNWAY
p. 112-113



01



02

CALAVERA
p. 114

AQUARELA
p. 115



01



02

ANIME
p. 116-117



01



02

TOPOGRAFIKA
p. 119



01



02

NEL VUOTO
p. 122-123



01



02

ARTISTIC



01

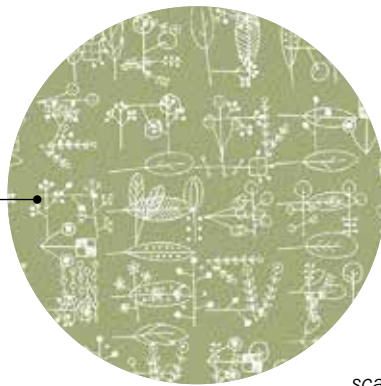


scale 1:10

BOTANICA
p. 120-121



02



scale 1:10

BOTANICA 01 ►

scala disegni 1:1
graphic scale 1:1



AUDACE

VARIANTS

AUDACE



01



02

ROSE ET NOIR

p. 128-129



01



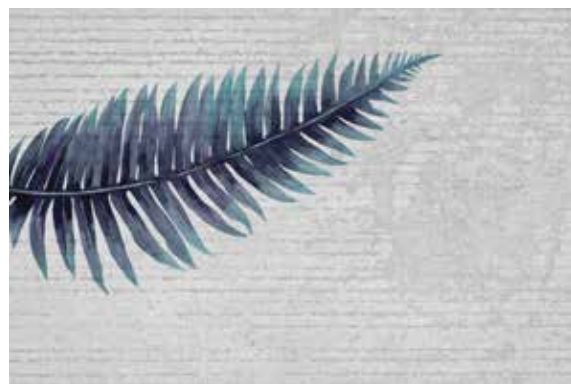
02

AMMONITI

p. 130-131



01



02

VERDE FELCE

p. 132-133



01



02

SERRA

p. 134

PLUVIA
p. 135



01



02

METROPOLITAN
p. 136-137



01



02

WHALE
p. 139



01



02

AWAY FROM ME
p. 140-141



01



02

AUDACE



01



02

LA SANTA
p. 144-145



01



02

BLACK DALIA
p. 146-147



01



02

LOTS OF GREEN
p. 148-149



01



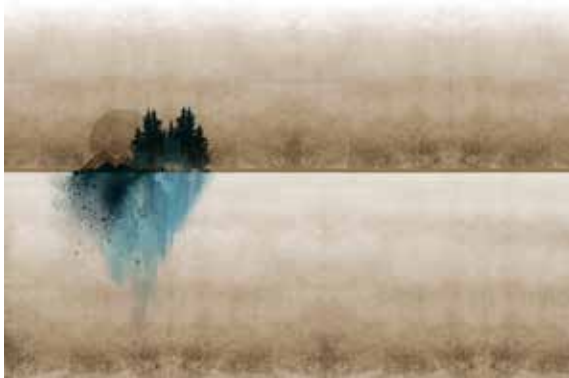
02

MONSFERA
p. 150

IMAGINE
p. 151



01



02

ARMONIA
p. 152-153



01



02

CORAL
p. 155



01



02

STONE
p. 156-157



01



02

AUDACE



01

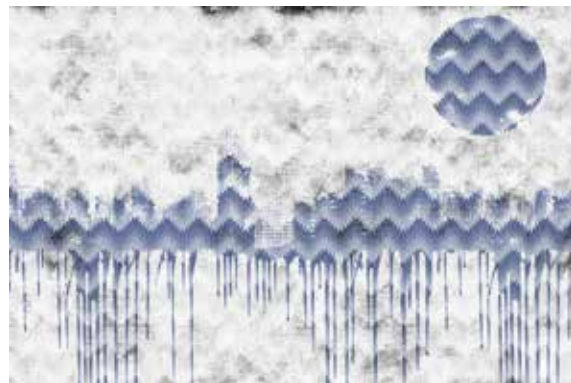


02

ROCK YOU
p. 160-161



01



02

VIRTUAL GAME
p. 162-163



01



02

VULCANO
p. 164



01



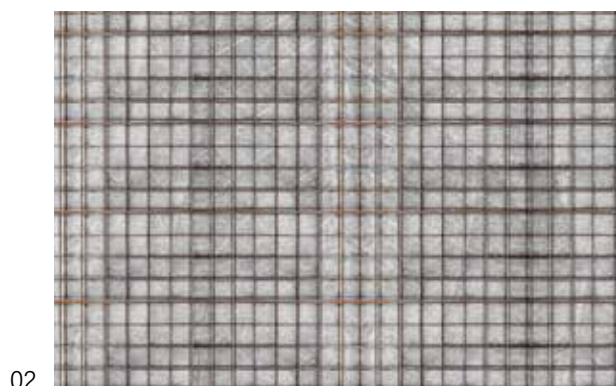
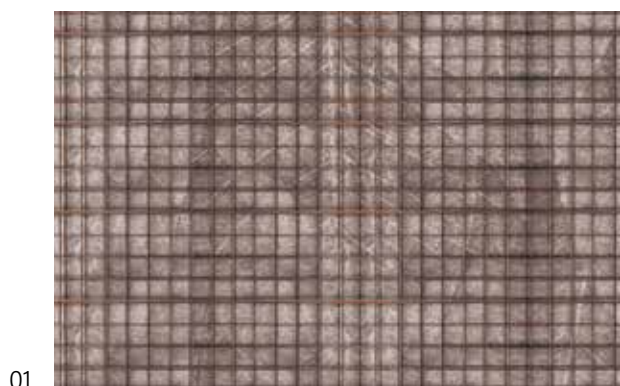
02

IARUMAS
p. 165

ARE YOU SURE?
p. 166-167



CEMENT STEEL
p. 168-169



BE YOUNG

VARIANTS

BE YOUNG



01



02

ANACLETO
p. 174-175



01



02

THE BOATS
p. 176-177



01



02

FANTASIE
p. 178-179



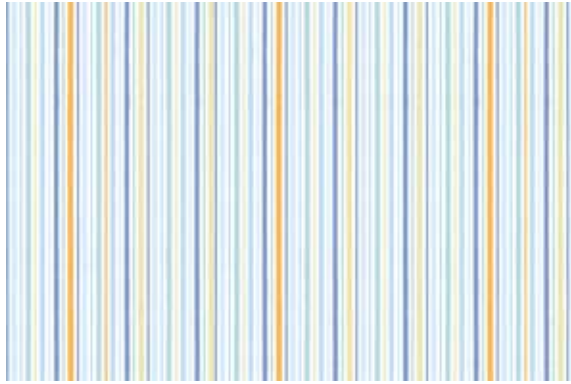
01



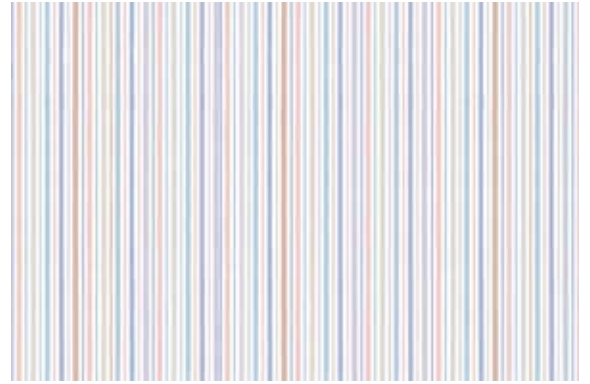
02

IL GIGANTE
p. 180-181

SHIRT
p. 183



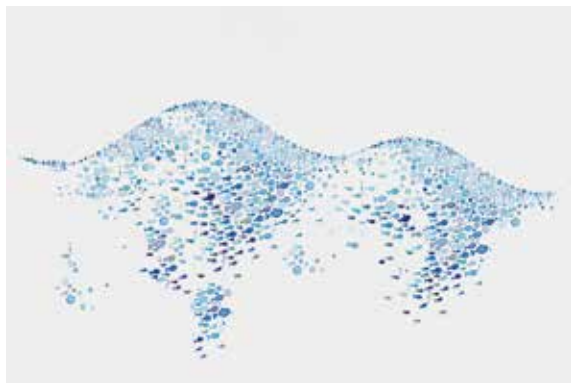
01



02

02

COLOR FISH
p. 186-187



01



02

02

PARIS
p. 188-189



01



02

BUBBLE BUBBLE
p. 190



01



02

BE YOUNG



01



02

NEDY
p. 191



01

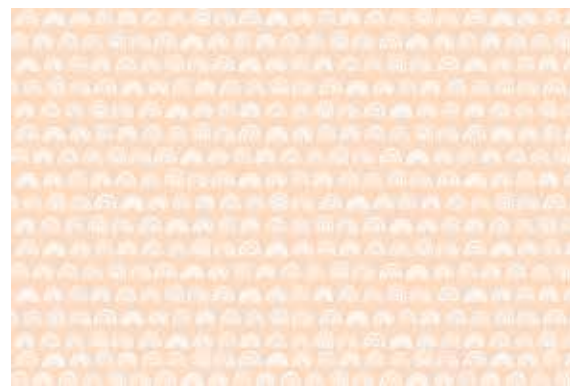


02

NODI
p. 192-193



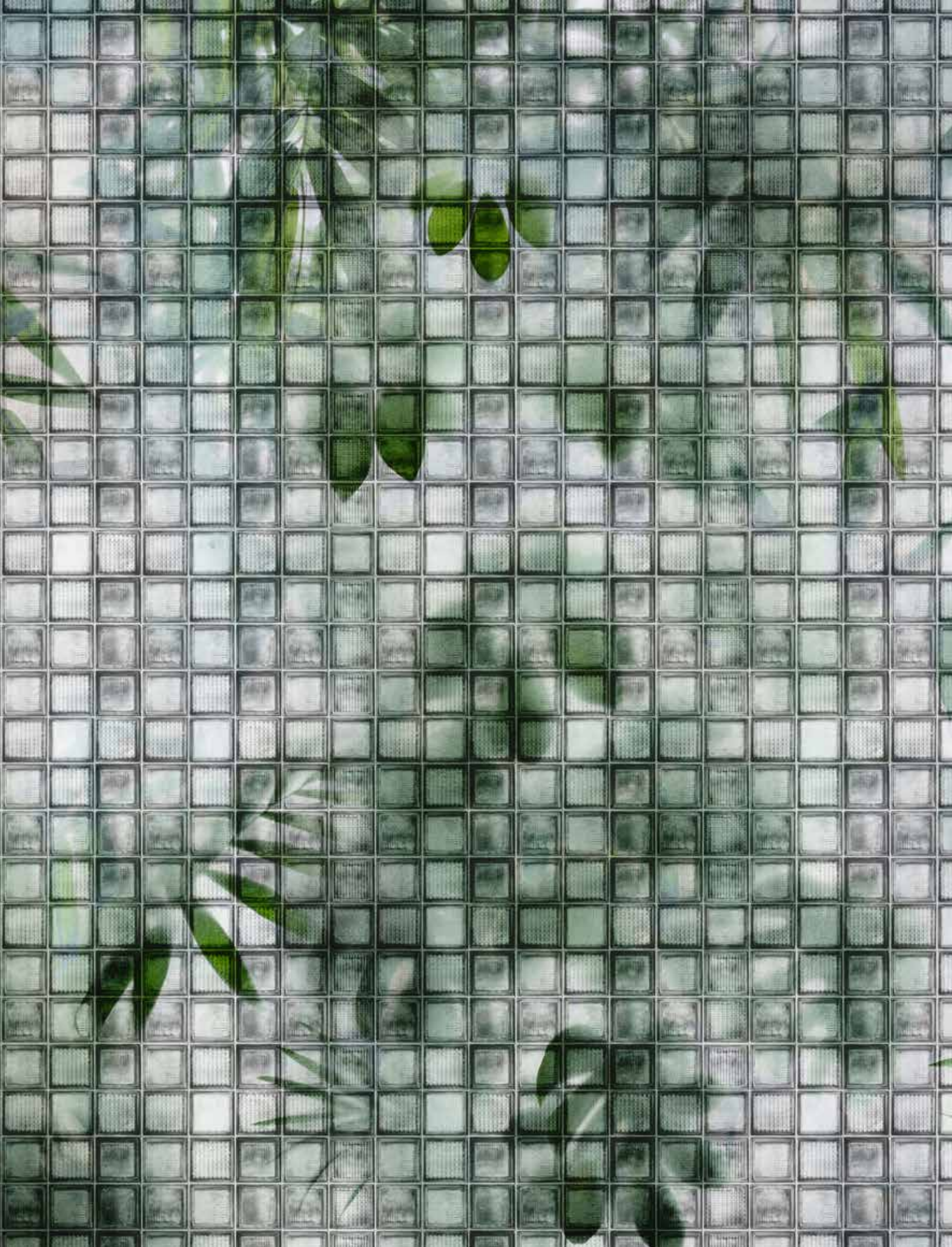
01



02

IL MIO ARCOBALENO
p. 194-195





Le colorazioni dei prodotti riportati sul catalogo sono da ritenersi puramente indicative e non hanno valore di prova colore.
The colours printed in this catalogue have to be considered merely indicative and have no colour proof value.



INSTABILELAB®

INSTABILELAB srl

Sede Operativa : Via Rivale, 59 - 30036 - Santa Maria di Sala - VENEZIA - Italy

Sede Legale: Via Chiesa, 39 - 30035 - Mirano - VENEZIA - Italy

Tel. +39 041 5760611

info@instabilelab.it